



**PHOENIX**  
**RACEWAY**

MEETINGS & EVENTS



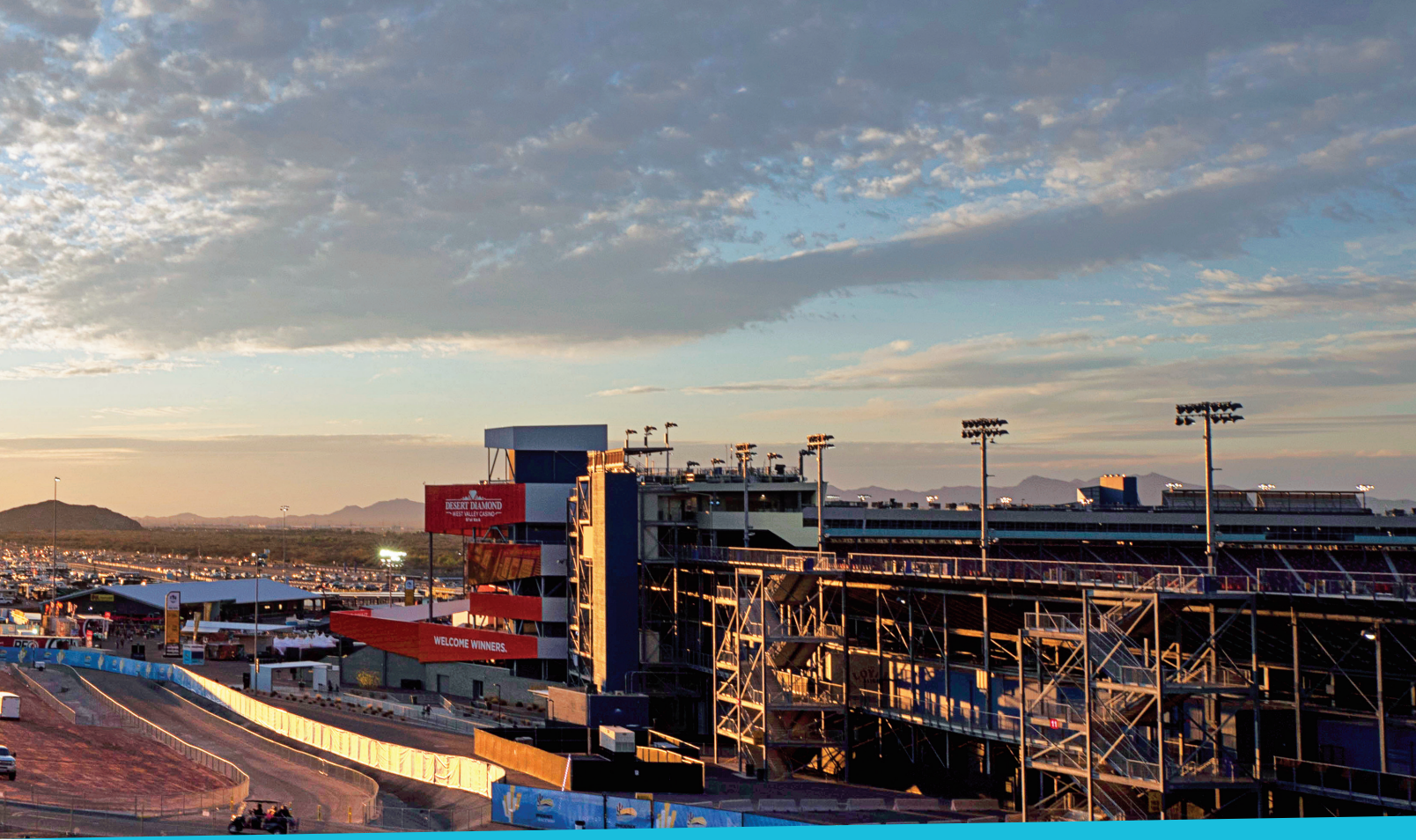
## ***MAKE YOUR EVENT GREAT***

A true crown jewel in the desert, Phoenix Raceway boasts state-of-the-art facilities and bold, ultra-modern amenities designed for a variety of special events.

Sophisticated engineering and design bring the addition of 54 suites, including three in the garage area, infield spaces and several contemporary hospitality areas offering something for everyone.

Treat your meeting attendees and event guests to a one-of-a-kind experience that will be enjoyed, appreciated and remembered by all.

Experience for yourself why Phoenix Raceway is the Southwest's premier event destination.



## MEETING & EVENTS SPACES

Room Name	Sq. Ft.	Max Capacity
The Barn™ Brewed by Busch Light	16,000 - 21,800	1,000 banquet/2,000 theater
Huss Brewing Co Alehouse	3,400 interior/10,000 patio	850 both areas
Ally Curve	5,800	300
Driver Meeting Room	4,000	240 banquet/500 theater
Garage Buildings	4,900-5,600	325-350 banquet
Infield Experience Patios	8,000-9,000	600
Suites	1,383	48
O'Reilly Auto Parts Crescent	100,000	10,000



## ***THE BARN™ BREWED BY BUSCH LIGHT***

This multi-functional space, is like stepping into a rustic barn with natural woods and metals throughout, a distressed wooden bar with TVs overhead, vintage bistro lighting and plenty of multipurpose space to build out the ultimate, most unique events! This is the place to be at Phoenix Raceway!



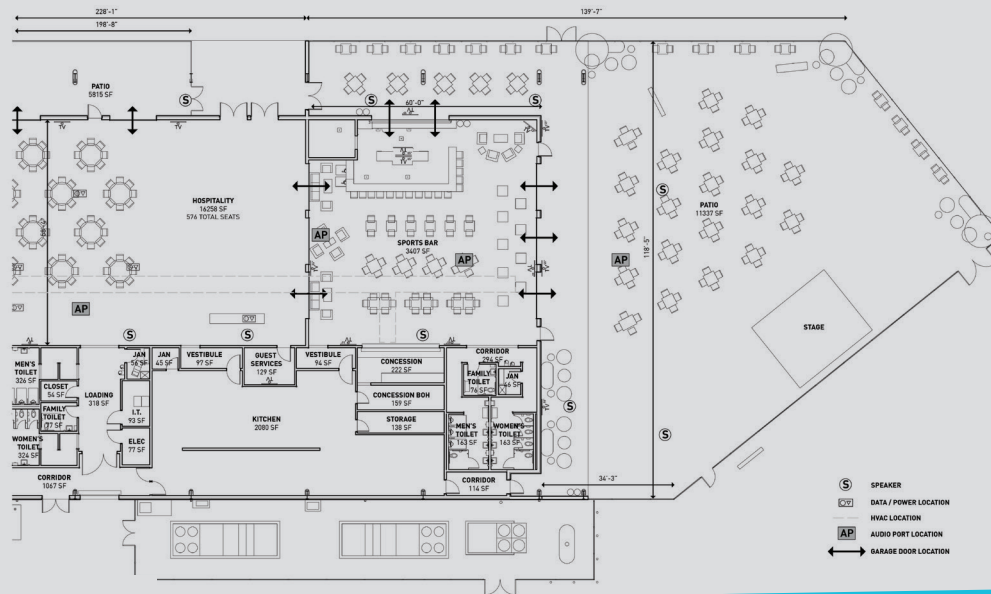


## ***HUSS BREWING CO. ALEHOUSE***

This indoor/outdoor multipurpose area boasts an iconic bar and accommodates both seated and reception-style events. The perfect pre-function space for corporate, social and family events. Expandable capacity allows for a variety of additional events.



## HUSS BREWING CO. ALEHOUSE | FLOOR PLAN



### AMENITIES

- 3,400 sq. ft. of interior, climate-controlled space
- Over 10,000 sq. ft. of exterior patio space
- Iconic bar with mixed seating
- Concessions area
- May be combined with The Barn™ for almost 20,000 sq. ft. of interior, climate-controlled space

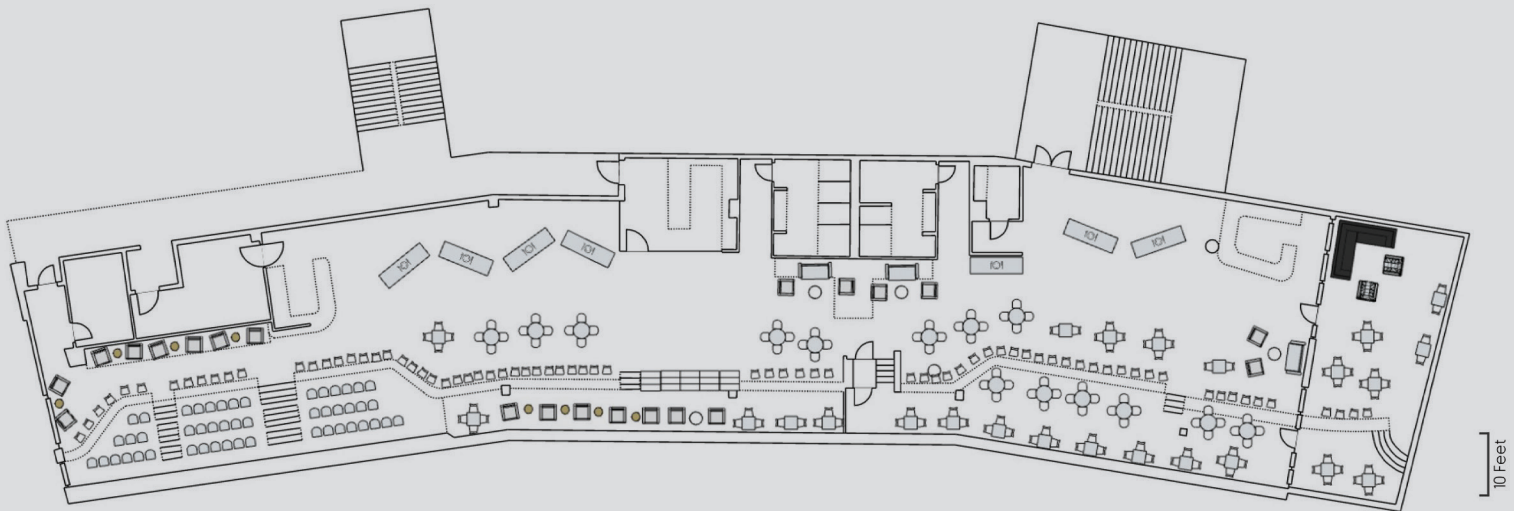


## **ALLY CURVE**

Steeped in luxury, featuring large glass windows overlooking the track, contemporary architecture and elegant appointments this exclusive club space includes modern technological elements, dedicated bar and indoor/outdoor lounge seating areas.



## ALLY CURVE | FLOOR PLAN



### AMENITIES

- A luxury hospitality club positioned above the grandstands, providing spectacular views of the entire facility
- 5,800 sq. ft. of interior space with mixed seating
- Exterior balcony space (669 sq. ft.) with mixed seating
- Multiple televisions, VGA / HDMI connections, audio system with two wireless microphones
- Two full-service, stylish bars with corresponding mobile catering stations



## ***DRIVER MEETING ROOM***

This space is, complete with modern upgrades and luxurious finishes, the Driver Meeting Room has a variety of seating options, natural light, neutral color palette, 100" digital projection screen and built-in speakers for sleek meetings or corporate functions.



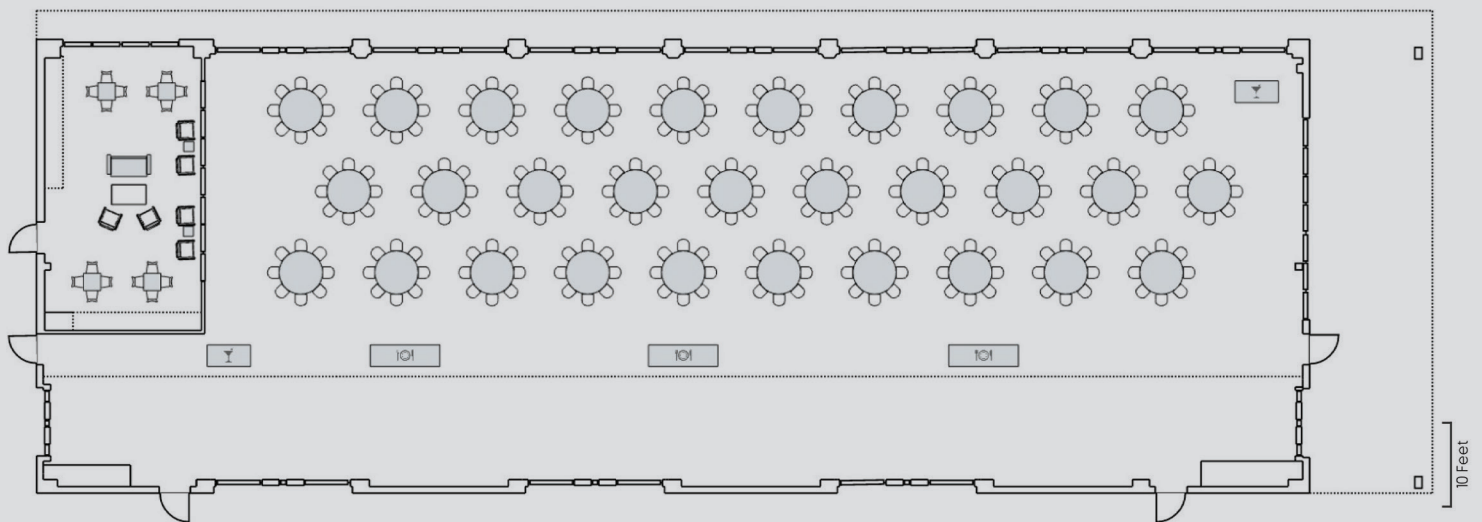


## ***GARAGE BUILDINGS & GARAGE SUITES***

Make your gathering truly unique by bringing it inside a NASCAR Garage! An ideal gathering space for everything from team building activities to banquets and cocktail receptions. In addition to two garage buildings, this space offers three garage suites (two in Garage 1 and one in Garage 2).



## GARAGE BUILDINGS & GARAGE SUITES | FLOOR PLAN



### AMENITIES

- Two large garages, located in the heart of the infield and close to pit road
- **Garage building 1** has approximately 5,600 sq. ft. of open space
  - Banquet seating for up to 350 people
  - Classroom seating for up to 500 people
- **Garage building 2** has almost 5,000 sq. ft. of open space
  - Banquet seating for up to 300 people
  - Classroom seating for 450 people



## ***INFIELD EXPERIENCE PATIOS***

Located in the heart of the \$178 million modernization, the Infield Experience boasts three unique locations – all with convenient amenities for publicly ticketed events or private functions, including shade canopies and branded concession areas.



## AMENITIES

- Three unique locations throughout the Infield Experience Patios
- Each provides:
  - Open-air seating for up to 150 people
  - Custom shade canopies with patio furniture for up to 50 people
- Branded concession stands are located at two of the patios and a custom, branded bar is available at the third location
- Spaces are 8,000-9,000 sq ft and can accommodate up to 600 guests

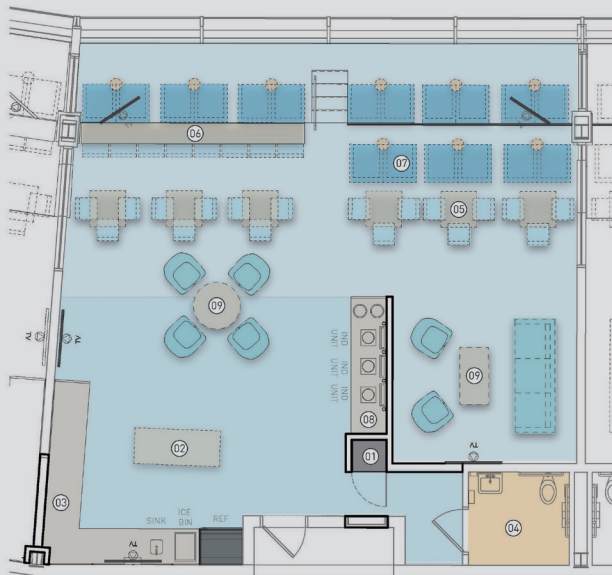


## **48-PERSON SUITES**

With the perfect blend of modern appointments and technology, these luxury suites feature a stylish entertainment area offering unprecedented views from the comfort of theater-style seating. Suites are fully equipped to host business lunches, networking events, informal dinners or lunches, and presentations and group presentations.



## 48-PERSON SUITES | FLOOR PLAN



- 01 CLOSET
- 02 HIGHTOP TABLE (FFE)
- 03 BAR AREA
- 04 TOILET ROOM
- 05 HIGHTOP TABLE & SEATING
- 06 BAR COUNTER SEATING
- 07 LOUNGE SEATING (FFE)
- 08 SERVING AREA
- 09 SOCIAL LOUNGE AREA

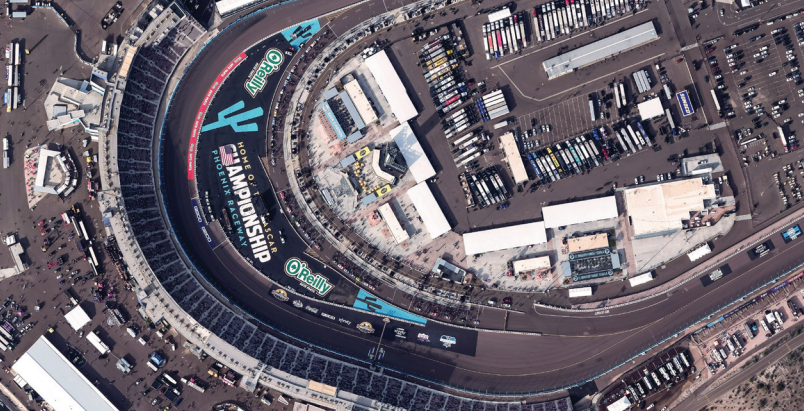
### AMENITIES

- Located high above Phoenix Raceway overlooking turns 3 & 4
- Mixed seating with lounge & high-top options
- Dedicated catering area, full-size refrigerator, private restroom



## **O'REILLY AUTO PARTS CRESCENT**

Located trackside, the massive O'Reilly Auto Parts Crescent provides an iconic backdrop amidst the hospitable desert climate. This 100,000 sq. ft. area is a blank canvas that offers endless possibilities to create a truly one-of-a-kind event.



## AMENITIES

- Over 100,000 sq. ft. of open-air space between pit road and the race track



**PHOENIX**  
**RACEWAY**

*7602 Jimmie Johnson Blvd., Avondale, AZ 85323*

*PhoenixRaceway.com*

*(623) 463-5400*

*facilityrentals@phoenixraceway.com*